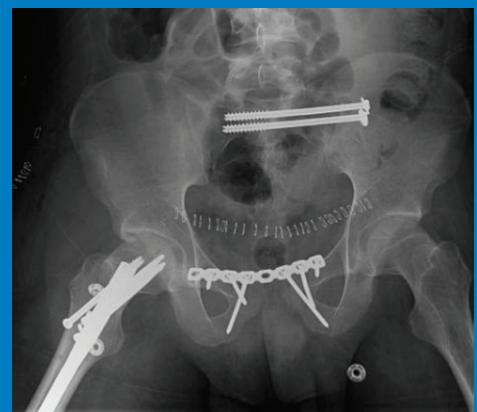


2017

**ATLANTIC TRAUMA AND
EMERGENCY MEDICINE CONFERENCE**
**CONGRÈS DE TRAUMATOLOGIE ET DE
MÉDECINE D'URGENCE DE L'ATLANTIQUE**

ATEM



#atlantictraumaandEM2017

f @atemc.ctmua

PROGRAM

DAY ONE – SEPTEMBER 21

THE ATLANTIC TRAUMA AND EMERGENCY MEDICINE CONFERENCE 2017

TIME	TRACK 1 EM	TRACK 2 TRAUMA	TRACK 3 NURSING/EMS
0815-0900	Welcome and conference opening		
0900-1000	Plenary: The Power of Teams When it Matters Most Dr. Chris Hicks, Emergency Physician and Researcher St. Michaels Hospital, Toronto, ON		
1000-1030	Break & Exhibits		
1030-1115	Where Technology and Coagulopathy Come Together	Managing Finger Fractures and Dislocations Dr. Don Lalonde	Disaster Medicine: Lessons Learned from the Military Dr. Trevor Jain
1115-1200	Maxillofacial Emergencies	Emergency Management of Head Injuries Dr. Andre le Roux	Hard Landing in Halifax
1200-1300	Lunch		
1300-1500	Debate: Cardiac Arrest Survival – What Works? An interprovincial panel		Debate: Geriatrics: The New Face of Major Trauma in Atlantic Canada An interprovincial panel
1500-1520	Break & Exhibits		
1520-1600	Research Rapid Fire – Dr. James French and Dr. Rob Green		
1600-1700	Plenary: Leadership and the NB Healthcare System Mr. Stephane Robichaud, CEO, NB Health Council		
1700-1900	Welcome Reception		

DAY TWO – SEPTEMBER 22

THE ATLANTIC TRAUMA AND EMERGENCY MEDICINE CONFERENCE 2017

TIME	TRACK 1 EM	TRACK 2 TRAUMA	TRACK 3 NURSING/EMS
0845-0900	Welcome to Day 2: An Injury Survivor’s Perspective		
0900-1000	Plenary: Saving Lives with the Preventable Campaign Dr. Ian Pike, Co-Executive Director, The Community Against Preventable Injuries, Vancouver, BC		
1000-1030	Break & exhibits		
1030-1115	Where Emergency Medicine Meets Critical Care Dr. Rob Green	Developing Performance for Trauma Teams: Human Factors Dr. Chris Hicks	Perceptions and Expectations of Nursing Practice: From New Graduate Transition to Inter-professional Collaboration Dr. Sheri Lynn Price
1115-1200	The Four Drugs That Matter in Emergency Airway Management Dr. Nick Sowers	Developing Performance for Trauma Teams: Ergonomics Dr. James French	Nursing Inter-professional Communications Mr. Landon James
1200-1300	Lunch & exhibits		
1300-1500	Debate: Whose EMS System Reigns Supreme in the Care of Major Trauma Patients? An interprovincial panel	Debate: Team Essentials in Safety Critical Environments: Perspectives from Medicine, Aviation, and the Nuclear Industry An interprovincial panel	
1500-1520	Break & exhibits		
1520-1600	Research Rapid Fire : Dr. James French and Dr. Rob Green		
1600-1700	Plenary: Rural Challenges and Opportunities – the Australian Experience Dr. Peter O’Meara, Professor of Rural & Regional Paramedicine LaTrobe University, Melbourne, Australia		

DAY THREE – SEPTEMBER 23

THE ATLANTIC TRAUMA AND EMERGENCY MEDICINE CONFERENCE 2017

TIME	TRACK 1 EM	TRACK 2 TRAUMA	TRACK 3 NURSING/EMS
0845-0900	Welcome to Day 3: A Cardiac Arrest Survivor's Perspective		
0900-1015	Plenary: Configuring Emergency Departments to Save Lives		
1015-1030	Break & exhibits		
1030-1100	Palliative Care at Home	The Initial Management of Pelvic and Acetabular Trauma Dr. Louis LeBlond	Community Paramedicine Dr. Peter O'Meara
1100-1130	The Literature and Emergency Medicine in 2017 Dr. Paul Atkinson	Pearls and Pitfalls in the Management of Spinal Fractures	Rotor Wing vs. Fixed Wing – 30 Minutes to Decide
1130-1230	Closing Plenary: What will change tomorrow? Dr. Scott Cameron, Dr. Andrew Travers, Dr. Tushar Pishe, Dr. Chrystal Horwood		

0730-1700

Delta Beausejour

\$525.00

Breaks and lunch
included

Advanced Musculoskeletal Trauma and Limb Support

First time offered in Atlantic Canada! This program for physicians and nurse practitioners meets the accreditation criteria of the College of Family Physicians of Canada and has been accredited for up to 8 Mainpro-C credits.

The Acute Musculoskeletal Trauma Limb Support course was developed by a group of orthopaedic surgeons from McMaster University who recognized the need to share the current knowledge of orthopaedic emergencies to our Emergency Department colleagues and physicians working in rural areas to improve their comfort level when managing orthopaedic emergencies. Where the ATLS course has had a great impact on the immediate management of trauma, the AMTLS course will focus on the continued management of orthopaedic injuries once the patient is stabilized.

Course objectives and content: The AMTLS course is a small group-based, interactive course, taking place over a single day. Teaching is case-based. A short introduction of each topic highlights important concepts and new information. A large number of case examples are used to illustrate the concepts and decision-making required for managing such injuries. All musculoskeletal injuries are covered, including spine injuries and hand trauma. It is expected that the course will provide the participants with the information needed to effectively diagnose and initiate management of the vast majority of orthopaedic injuries commonly seen.

0800-1800
Theatre A
The Moncton
Hospital
\$200.00
Breaks and
lunch not
included

Emergency Practice, Interventions and Care - Canada (EPICC) - Trauma

This new addition to the EPICC Education program for nurses is based on the National Emergency Nurses Association (NENA) Core Competencies of the Emergency Nurse. These Core Competencies are available on the NENA website at www.nena.ca. Using small group, large group and simulation, the course focuses on the Emergency Trauma care of the adult.

The course is a mixture of pre-course online modules, classroom, small group case practice/simulation and psychomotor skill stations.

There is a customized evaluation process before and throughout the course. There is no formal written or practical examination. The evaluation process is one-on-one with an instructor and involves the individualized assessment of your skills and development of future learning goals.

The EPICC-Trauma course is a part of the NENA EPICC program. This course usually requires completion of the EPICC-Foundations course beforehand but this requirement will be waived for conference participants as access to EPICC-Foundations in Atlantic Canada has been limited. There will be additional online preparation before the EPICC-Trauma program and a longer education day to ensure the best educational experience for learners.

1300-1600
Delta
Beausejour
\$90.00
Coffee break
included

Hot Topics in Concussion Assessment and Management

This is a must attend event for any healthcare practitioners who regularly encounter cases of concussion in their clinical practice. During this half-day workshop, we will highlight the latest evidence-based information for the assessment and management of this type of brain injury. Benefit from interactive discussions, testimonials and presentations from experienced healthcare professionals and researchers in a relaxed atmosphere.

0800-1700
Delta
Beausejour
\$700.00 for MD
\$200.00 for
non-MD
Breaks and
lunch included

Trauma Simulation

NB Trauma Program Mobile Simulation is a dynamic interdisciplinary trauma simulation program. Participants in this full-day session will learn key skills and behaviours in a simulated trauma setting, integrating the principles of crisis resource management, deliberate practice, effective team communication and debriefing, with an initial clinical focus on rapid sequence induction and associated post-intubation sedation and pain management.

WORKSHOP - SEPT 21 & 22

THE ATLANTIC TRAUMA AND EMERGENCY MEDICINE CONFERENCE 2017

Hour-long
sessions each day
Delta
Beausejour
Free: register
at conference
desk anytime

All you need to know about IO!

Intra-osseous access has become a standard of care in situations where vascular access is difficult to obtain in urgent, emergent and medically necessary situations. Open to all delegates, this workshop's goal is to increase health care professionals' knowledge and comfort level towards IO access. The 1 hour session will provide didactic teaching and hands on practice covering the following key concepts:

- Indications and Contraindications
- Basic bone anatomy
- Site selection/identification
- Needle set selection
- Insertion technique
- Infusing medications and fluids
- Care of the patient
- Assessment/documentation
- Removing the catheter
- Care of the driver
- Clinical support resources