

# Leadership and the NB Health Care System

September 21, 2017



# The NBHC

- Our Mandate
- The evolution of our work



# Leadership and the NB Health Care System

- Leadership: What is it? Does it exist in health care?
- Health Care System: What is it? Is it a system?



# Publicly Funded Health Services

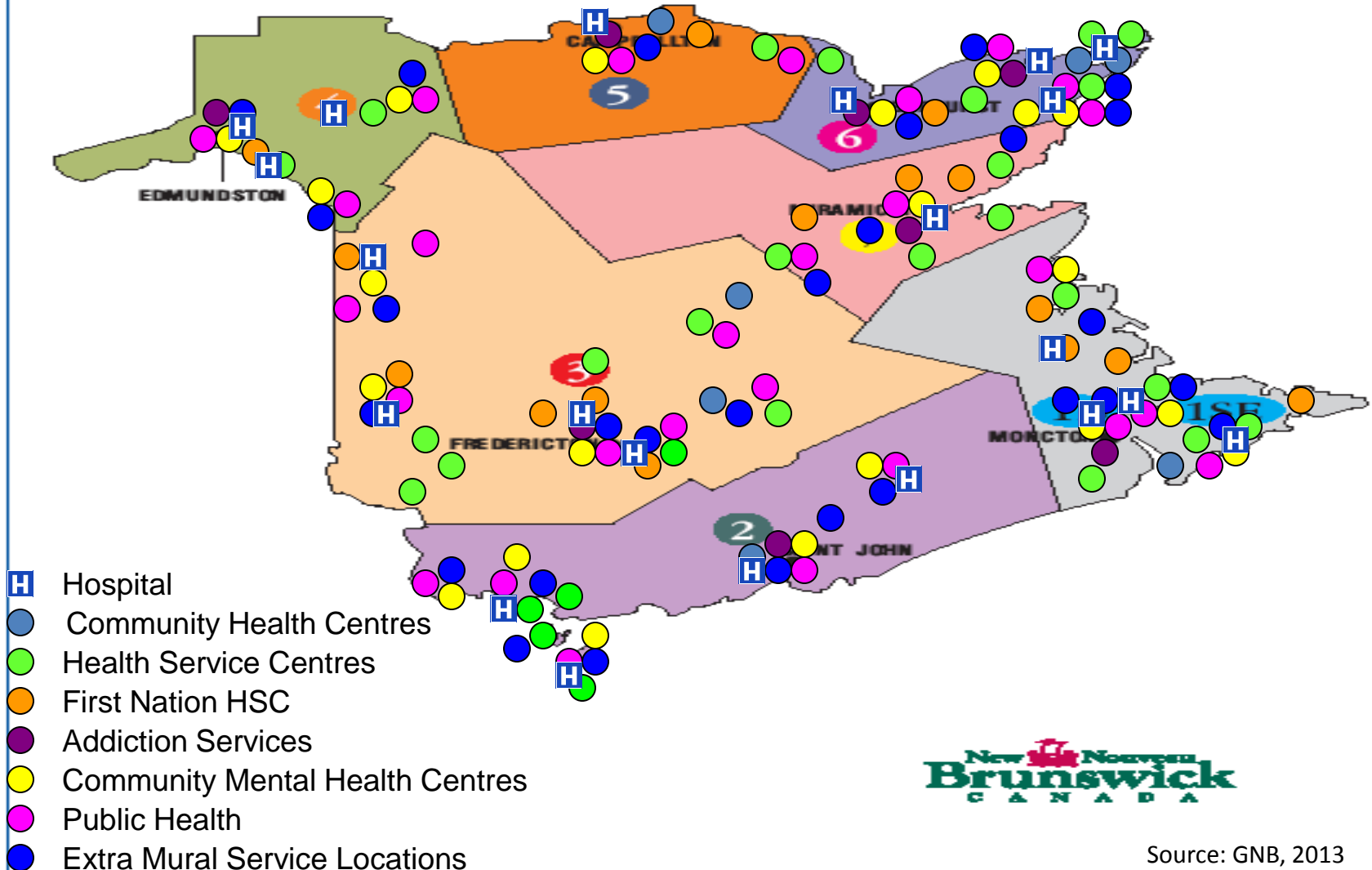
- Most valued of all public services
- Weight in provincial public service
- Complication: knowledge of decision process
- Not conducive to leadership development



# Question

- At the provincial level, how can we effectively leverage leadership for improving the performance of publicly funded health services?

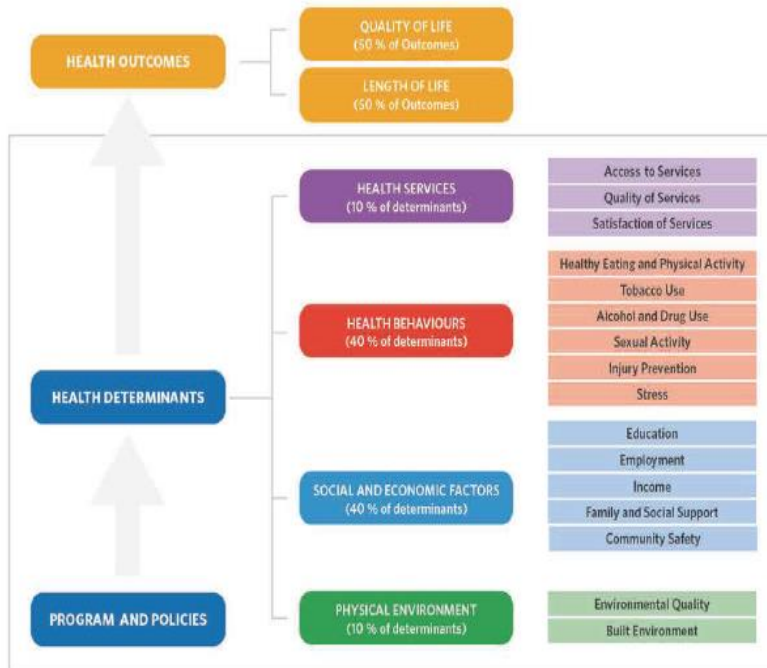
# Services available in New Brunswick





# Citizen centered focus

- Population Health
- Health Services Quality



## 2016 New Brunswick Health System Report Card

Overall performance grade	<b>C</b>
---------------------------	----------

By health sector

Primary health	<b>D</b>
Acute care	<b>B</b>
Supportive/Specialty	<b>D</b>

By quality dimension

Accessibility	<b>C</b>
Appropriateness	<b>C</b>
Effectiveness	<b>C</b>
Efficiency	<b>D</b>
Equity	<b>C</b>
Safety	<b>C</b>

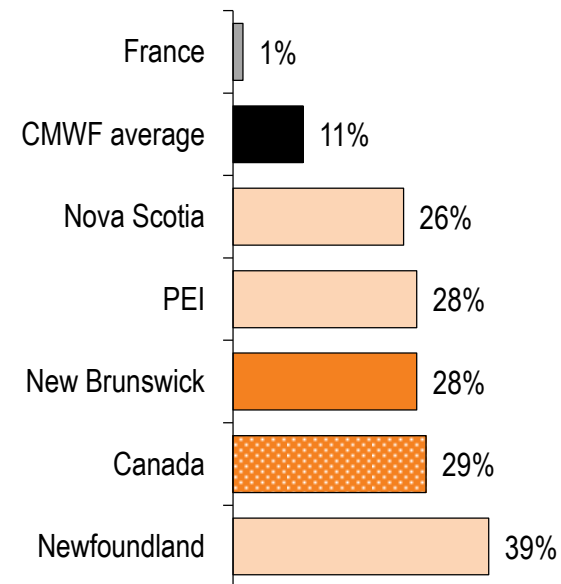
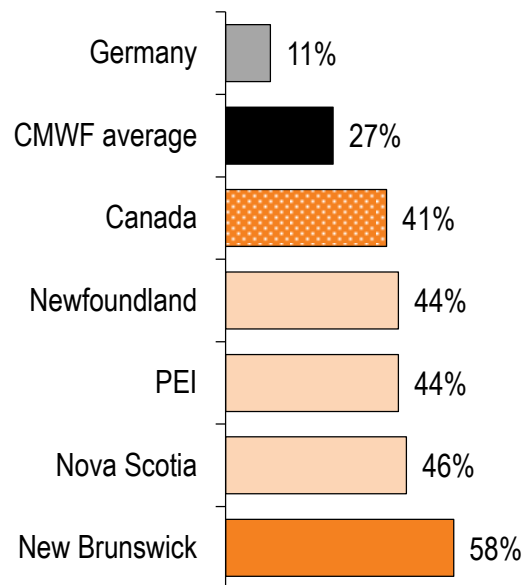


# Use of emergency room services

Adults who used an emergency department in the past two years

More than four hours wait in ER

How does New Brunswick compare (2016)?







# Where do you go when sick or need of care?

Which one of the following BEST describes what you do when you are sick or need care from a doctor, nurse or other health professional?

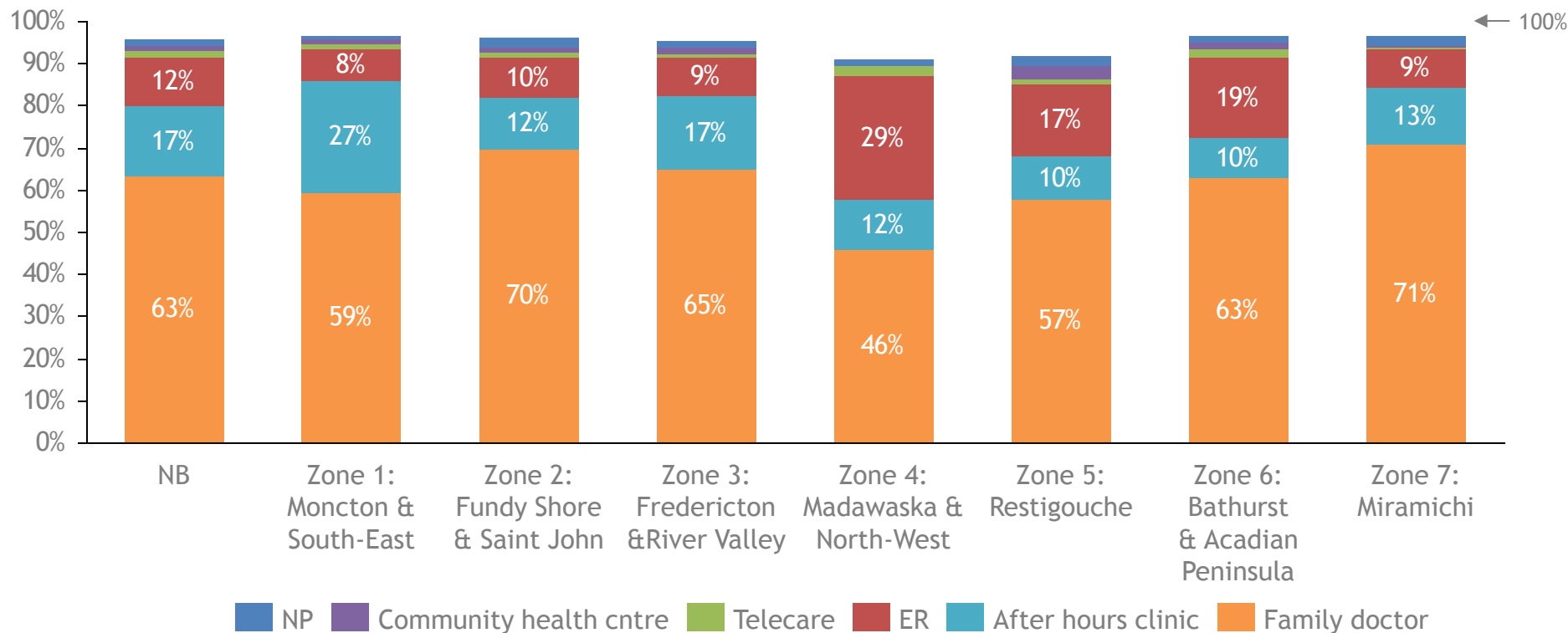
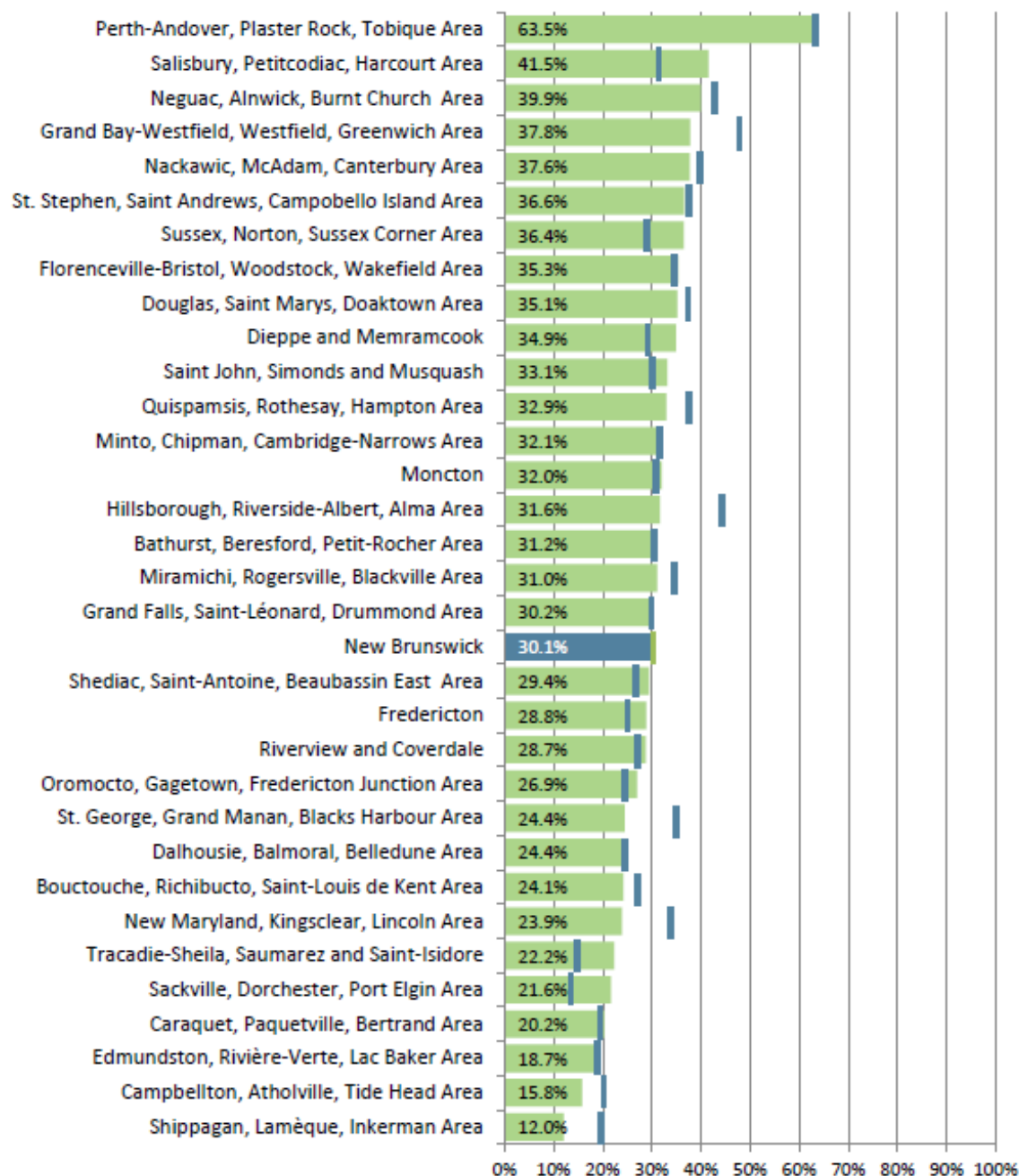


Figure 2. How quickly appointment can be made with family doctor

(% on same day or next day)

■ 2014 ■ 2011



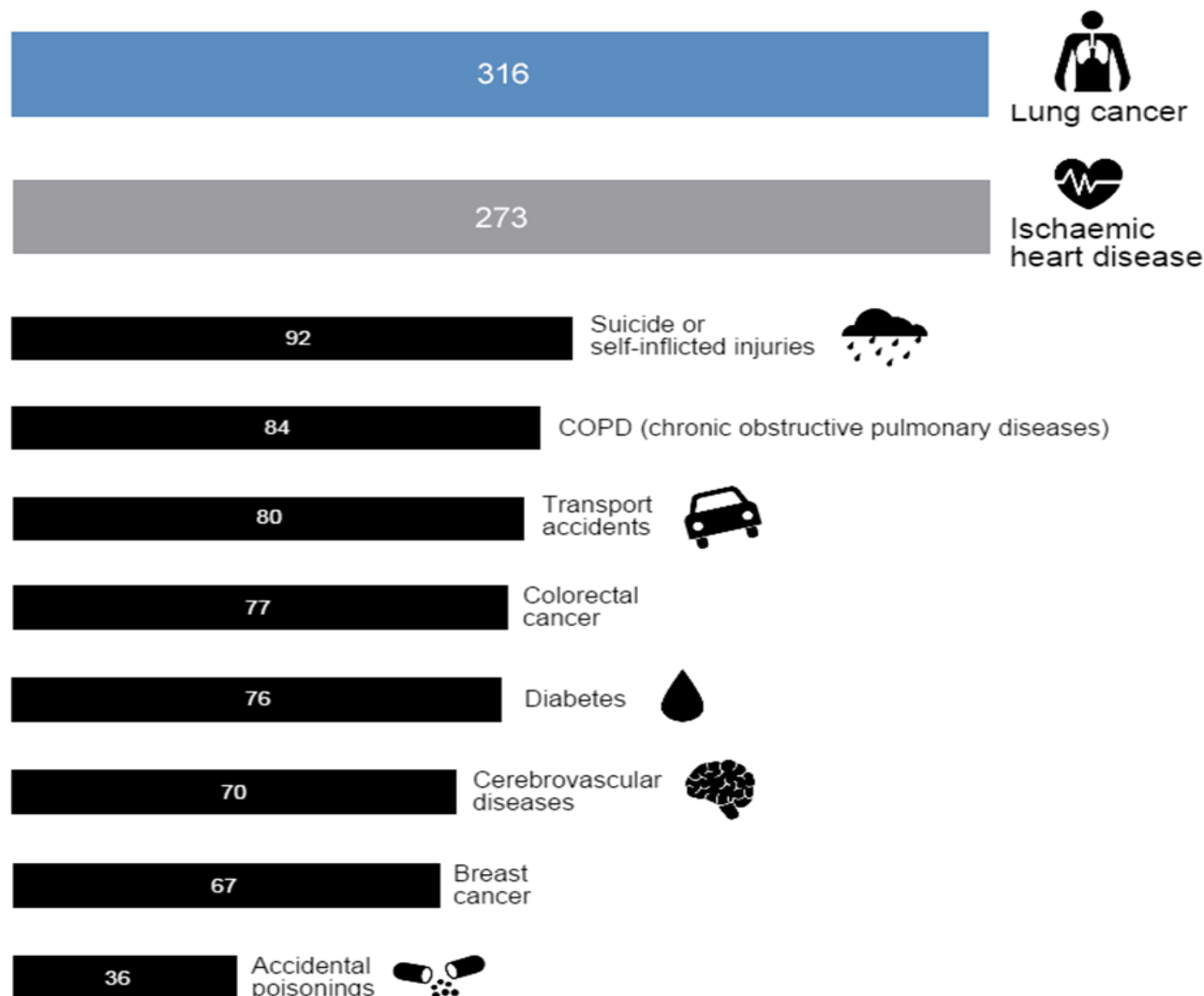


# Avoidable Mortality

- Top 10 causes in NB
- Treatable Causes vs. Preventable Causes
- Premature death from injuries

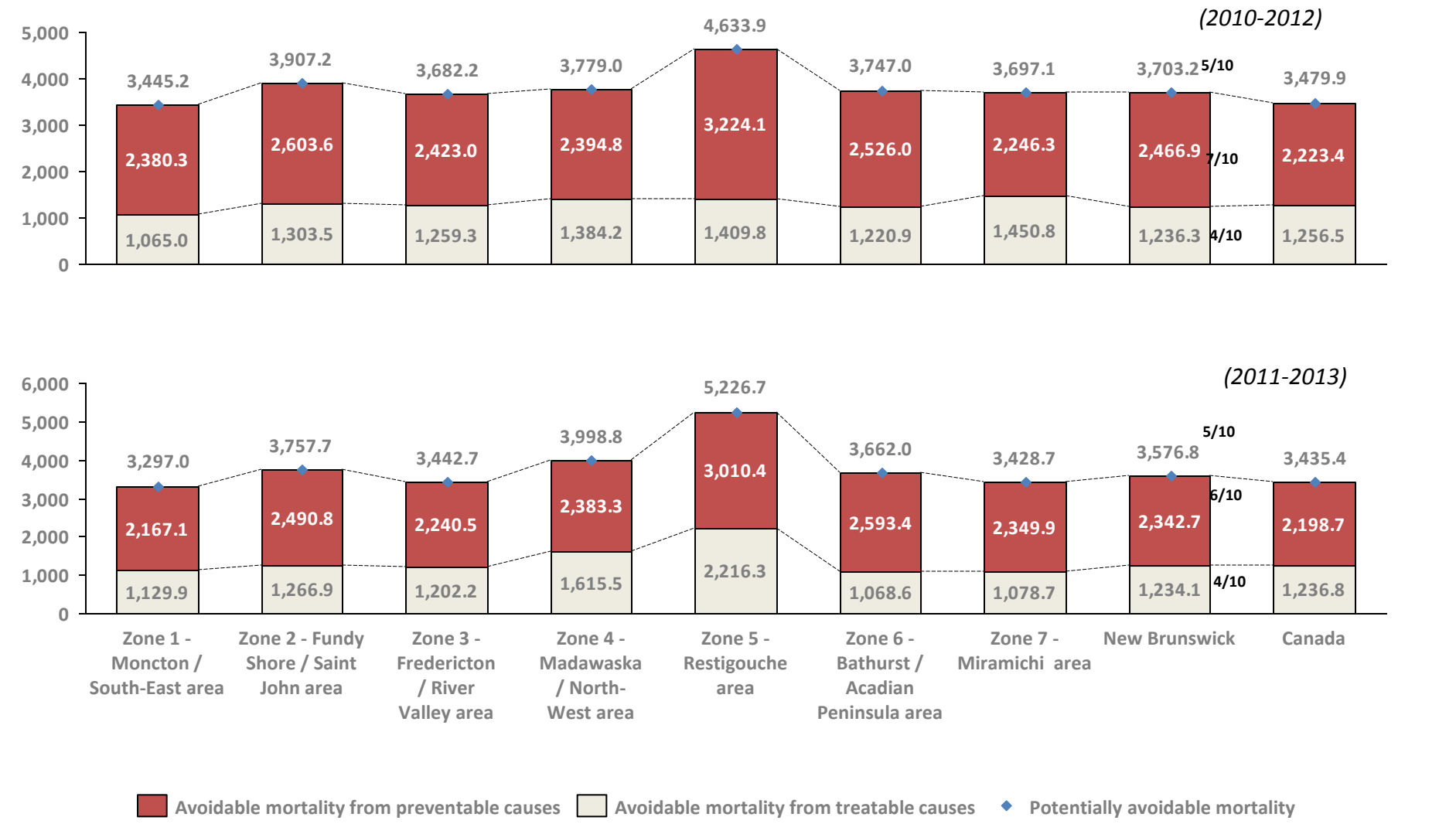
# Top 10 causes of avoidable deaths in New Brunswick

Number of New Brunswickers who die per year:



# Avoidable mortality across New Brunswick (Preventable vs. treatable)

Age standardized PYLL rate/ 100,000 population

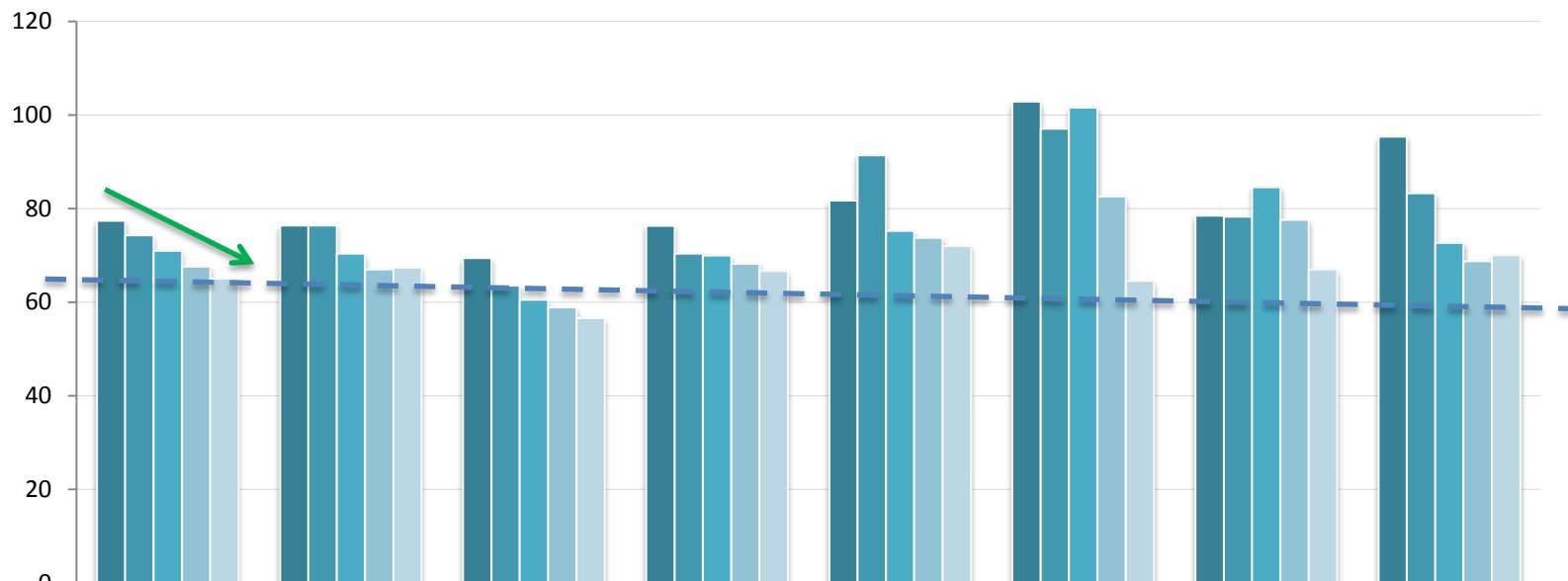


Source: Statistics Canada, Canadian Vital Statistics, Death Database and Demography Division (population estimates). CANSIM table 102-4315

2012  
NB: 74  
CAN: 56

# Premature death from injuries

(potential years of life lost, rate per 10,000)



	New Brunswick	Zone 1 - Moncton / South-East	Zone 2 - Fundy Shore / Saint John	Zone 3 - Fredericton / River Valley	Zone 4 - Madawaska / North-West	Zone 5 - Restigouche	Zone 6 - Bathurst / Acadian Peninsula	Zone 7 - Miramichi
2006-2010	77.37	76.35	69.37	76.25	81.63	102.79	78.41	95.32
2007-2011	74.26	76.33	63.47	70.34	91.33	97.03	78.24	83.19
2008-2012	70.89	70.29	60.45	69.88	75.2	101.51	84.51	72.59
2009-2013	67.51	66.96	58.82	68.18	73.72	82.51	77.52	68.7
2010-2014	64.96	67.36	56.51	66.6	71.94	64.49	66.93	69.98



# How can we effectively leverage leadership?

- Ongoing engagement of health service providers in the identification and monitoring of health service quality improvement



# Social media



[linkedin.com/company/new-brunswick-health-council---conseil-de-la-santé-du-nouveau-brunswick](https://linkedin.com/company/new-brunswick-health-council---conseil-de-la-santé-du-nouveau-brunswick)



[twitter.com/nbhealthcouncil](https://twitter.com/nbhealthcouncil)



[facebook.com/NBHC.CSNB/](https://facebook.com/NBHC.CSNB/)